

**VOLANTÉ**  
SURGICAL TABLES



BRINGING  
**VERSATILITY**  
TO THE OPERATING ROOM



PRODUCT  
OVERVIEW

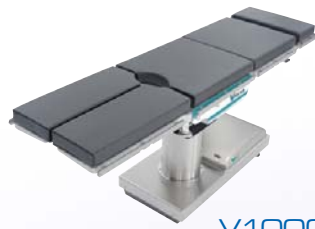
NUVO

# Volanté

Versatility begins with “V” ...



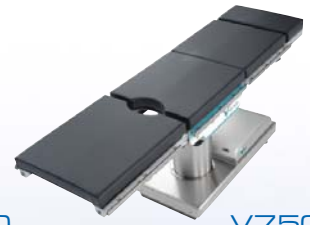
Full-feature table controlled by hand control or optional foot control



V1000T



V1000



V750

## The Volanté Series of Surgical Tables.

- Sleek, streamlined stainless steel construction
- Powered surgical table with 180° rotating top
- Full-length radiolucent top
- Offset cylindrical column for superior imaging
- Superior weight capacity
- Standard back-up battery
- Auto-leveling brake system
- 12" horizontal slide
- Full line of accessories for all specialties
- Optional traction bar assembly
- Removable head and/or leg section
- All models include 2" pressure-relieving mattress
- Ease of movement with steering castors

## 180° ROTATING TOP

Experience the ease of patient positioning with the Volanté 180° rotating top.

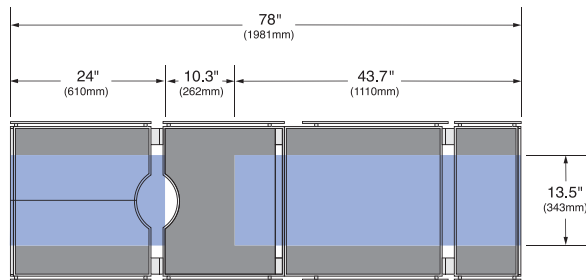


## ENHANCED IMAGING ACCESS

“Image” the possibilities with the Volanté line of surgical tables.

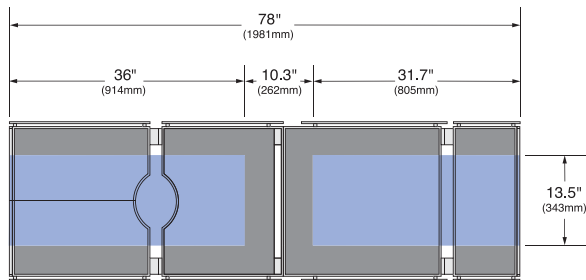
### V1000T

Volanté's V1000T 12" horizontal sliding top offers superior full-body imaging access. Whether it's the upper torso or lower extremities, the surgical staff will have total control at their fingertips.



■ X-ray via cassette tunnel, and C-arm imaging

**Table Traversed Toward Head** →

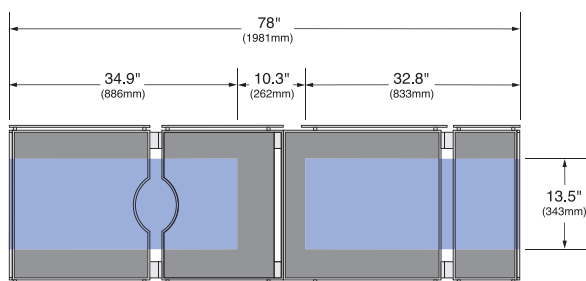


■ X-ray via cassette tunnel, and C-arm imaging

← **Table Traversed Toward Foot**

### V1000 & V750

Volanté's V1000 and V750 offer excellent C-arm access with 180° rotating table top.



■ X-ray via cassette tunnel, and C-arm imaging

# Models V1000T, V1000 & V750



Neurological  
Seated Position



Nephrectomy  
Procedure



Laminectomy  
Procedure



Gynecology & Urology  
Procedures

# V1000T Orthopedic

When you don't have  
time to waste ...  
Volanté Traction Assembly



Fibia and Tibia



Lateral Position



Hip Fractures

## Volanté Traction Assembly requires only one person for installation.

Simply remove the standard split leg section of the Volanté V1000T and the traction assembly attaches effortlessly. The V1000T is a surgical table for all specialties.



*(Shown with transport cart and all accessories.)*

## NUVO Shoulder Chair



NUVO Shoulder Chair attaches effortlessly to the Volanté line



Lateral support and removable wings for unparalleled access

# Models



**V1000T**

1000 lbs. Lift Capacity  
800 lbs. Articulation  
12" Horizontal Slide  
180° Rotating Top

Removable Head Section  
Standard Removable Split Leg Section  
Optional Traction Bar Assembly  
Ideal for all Specialties



**V1000**

1000 lbs. Lift Capacity  
800 lbs. Articulation  
180° Rotating Top  
Removable Head Section  
can be attached to Leg Section

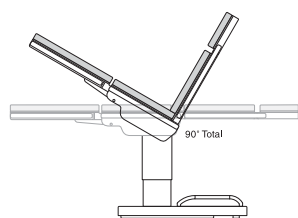
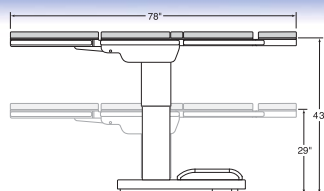


**V750**

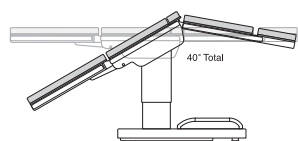
750 lbs. Lift Capacity  
750 lbs. Articulation  
180° Rotating Top  
Removable Head Section  
can be attached to Leg Section

**From Trauma Surgery to Ambulatory Surgery, the Volanté Series brings versatility to the operating room.**

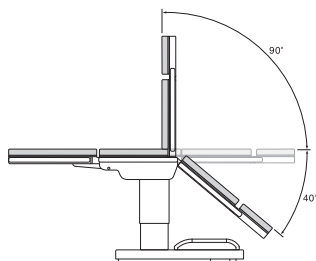
# Dimensions



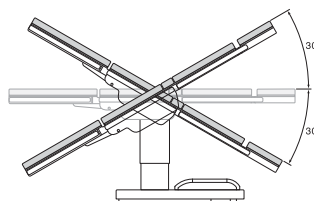
Reflex 90°



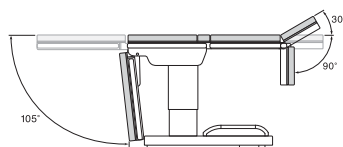
Flex 40°



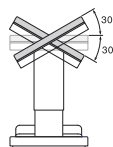
Back Up 90°  
Back Down 40°



30° Trendelenburg  
and Reverse Trendelenburg



Head Up 30° Head Down 90°  
Leg Up 0° Leg Down 105°



30° Lateral Tilt  
Right & Left

<b>Table Top</b>	
Length:	78 inches
Width:	19-3/4 inches
Max. Height:	43 inches
Min. Height:	29 inches
<b>Lift Capacity</b>	
V1000T	1,000 lbs.
V1000	1,000 lbs.
V750	750 lbs.
<b>Articulation</b>	
V1000T	800 lbs.
V1000	800 lbs.
V750	750 lbs.
<b>Lateral Tilt</b>	30 degrees
<b>Trendelenburg</b>	30 degrees
<b>Back Section</b>	+ 90 degrees - 40 degrees
<b>Head Section</b>	+ 30 degrees - 90 degrees
<b>Leg Section</b>	+ 0 degrees - 105 degrees
<b>Table Rotation</b>	180 degrees
<b>Self-Leveling Brakes</b>	Powered

Your Local Contact:



A member of the Medical Illumination International Group

5368 Kuhl Road • Erie, PA 16510-4703  
(800) 663-1152 • (814) 899-4220  
Fax: (814) 899-1410  
[www.nuvosurgical.com](http://www.nuvosurgical.com)



32951 Calle Perfecto  
San Juan Capistrano, CA 92675  
(866) SURGEQUIP / (949) 492-8400  
[info@surgequipsolutions.com](mailto:info@surgequipsolutions.com)

NUVO reserves the right to make changes without notice in design, specifications, and models. The only warranty NUVO makes is the express written warranty extended on the sale or rental of its products.

© 2007 NUVO, Inc.  
ALL RIGHTS RESERVED.